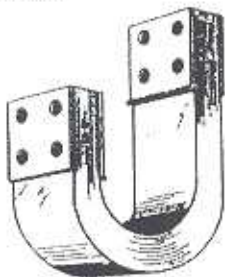


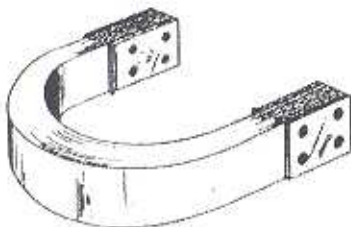
LAMINATED SHUNTS

The RWCPSS Laminated Shunt Maximizes your shunt life and maximizes your current carrying capabilities.

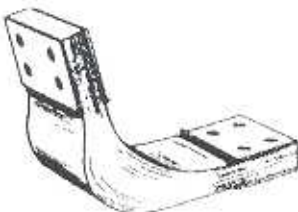
- Soldered Leaf Design
- Press Welded Mounting Plates
- Silver Plated
- Top Graded Copper Alloys
- Special Tin Plating Upon Request



Laminated Shunt - "J" Shape

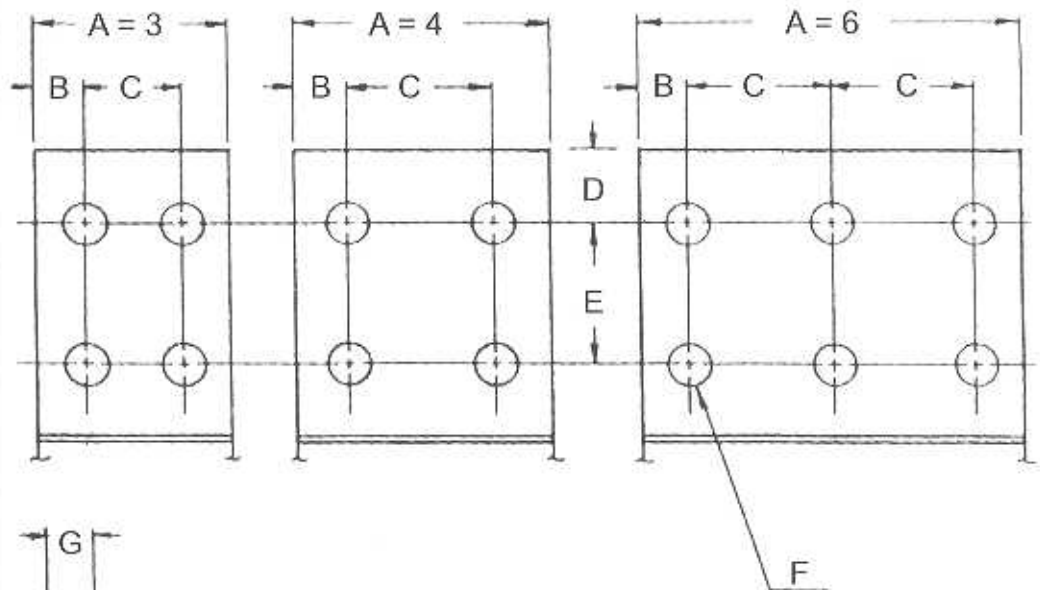


Laminated Shunt - "C" Shape



Laminated Shunt - "V" Shape

LAMINATED SHUNT - ORDERING INFORMATION



SPECIFY THE FOLLOWING

- A • Width _____
- B • Hole Location _____
- C • Hole Location _____
- D • Hole Location _____
- E • Hole Location _____
- F • Hole Diameter _____
- G • Thickness _____
- H • Inside Length _____
- I • Outside Length _____
- J • Quantity Required _____

OR SPECIFY RWC DRAWING NUMBER

#

RWC PRODUCTION SUPPORT SERVICES, INC. - 989.667.2800

1800 S. EUCLID AVE., BAY CITY, MI 48706

FAX 989.667.2801

WWW.RWCPSS.COM